



Stops the Red Poultry Mite

**Revolution
in effectiveness**



Works 12 x faster*



Protects up to 2 x longer*



Also adheres to oily
surfaces*

*compared to conventional
diatomaceous earth products



Home shield®

Your expert for healthy animals.

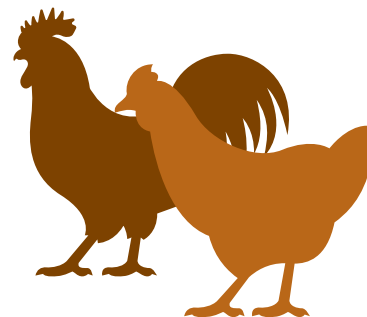


www.fossil-shield.de



Product overview

Professional protection against the Red Poultry Mite in poultry production



The red poultry mite belongs to the arachnids and can grow to a length of up to 1 millimetre. It is found in almost every poultry population. In case of heavy infestation or lack of hosts, the mites also pose a serious problem for humans. The mites are grey, but turn grey-brown after feeding. The eggs of the red poultry mite are pale, almost transparent and about 0.4 millimetres in size.

Approximately 80 percent of poultry farms are affected by the red poultry mite.

Poultry farmers fear these bloodsuckers, because the tiny ectoparasites are hardly visible to the naked eye and difficult to control. For example, the red poultry mite has been observed to travel up to 30 metres to find new hosts. The red poultry mite is nocturnal and retreats into narrow crevices and cracks and open colonies during the day.

Home Shield® is hydrophobic (water-repellent) and remains fully effective even in environments with higher humidity. Natural diatomaceous earth is hydrophilic (water-attracting), which means that the active ingredient becomes saturated in

higher humidity and then only has a limited effect on the red poultry mite. It is thanks to this circumstance that, compared to diatomaceous earth, Home Shield® products with a very low percentage of active ingredient are more effective on the red poultry mite.

The carriers in Home Shield® products are for the most part silica of natural origin and are used exclusively for the even distribution of the active ingredient and therefore for application and active ingredient efficiency.

Effective immediately and long-lasting against red poultry mite.

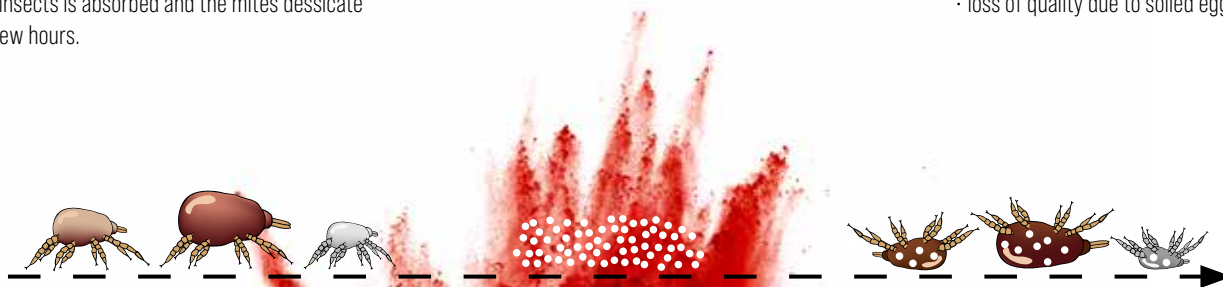
Home Shield® products with synthetic amorphous silicon dioxide as the active ingredient have a purely physical effect. The mechanism of action sets in as soon as the parasites come into contact with the product and dust themselves with the silica. The evaporation-inhibiting protective layer of the parasitic insects is absorbed and the mites desiccate within a few hours.

How does Home Shield® work?

Home Shield® products with synthetic amorphous silicon dioxide as the active ingredient have a purely physical effect. The mechanism of action sets in as soon as the parasites come into contact with the product and dust themselves with the silica. The evaporation-inhibiting protective layer of the parasitic insects is absorbed and the mites desiccate within a few hours.

The red poultry mite causes great economic damage.

- anaemia
- increased stress
- a weakened immune system
- behavioural disorders
- reduced laying performance
- weight loss
- increased feed consumption
- transmission of pathogens such as diphtheria, avian cholera, etc.
- inferior breeding results
- aggressiveness all the way to cannibalism
- anaemic death
- loss of quality due to soiled eggs



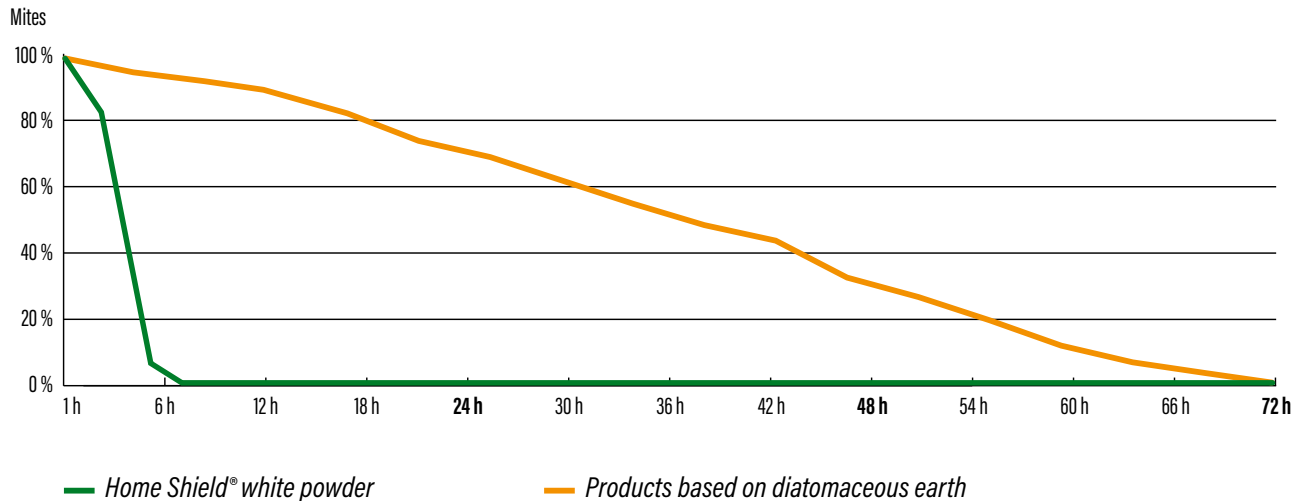
The mites come into contact with Home Shield® products on their way to the host animal and become desiccated.

Home Shield® products cause a physical absorption of lipids on the epicuticle of the mites. The wax layer that protects the mites from desiccation is destroyed upon contact. The mites dehydrate and become desiccated. Home Shield® products have a long efficacy curve, which has the advantage that even parasites that hatch from the eggs weeks later are effectively killed.



Works 12 x faster

Efficacy curve of Home Shield® white powder in comparison to conventional diatomaceous earth products.



Home Shield® white powder is effective against the red poultry mite in just a few hours, compared to up to three days with conventional diatomaceous earth products.





Home Shield® combats immediately 4 mite stages



Larvae



Protonymphs

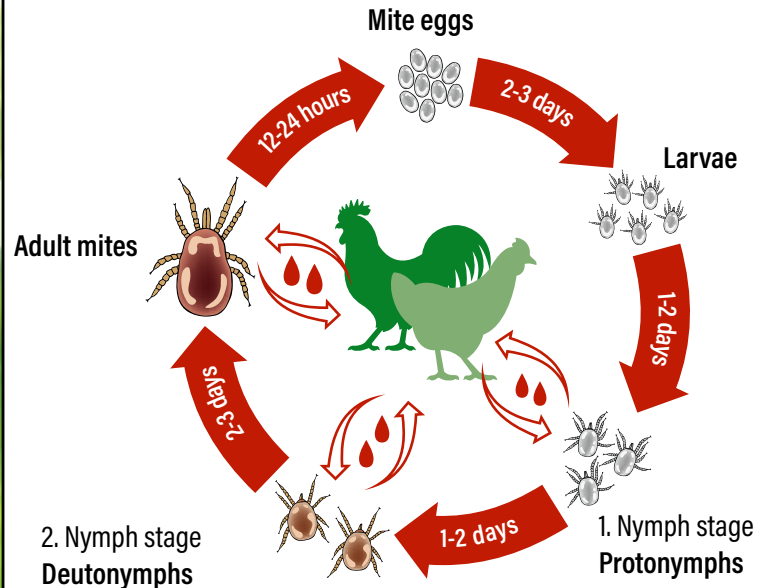


Deutonymphs



Adult mites

Life cycle of the red poultry mite



The advantages of our Home Shield® products

Product

- Works in just a few hours
- Maximum yield and efficiency
- In conformance with the EU biocide directive
- No build-up of resistance
- Perfectly effective at high humidity

Animal

- Prevents disease transmission
- Combats feather-plucking
- Reduced feed intake due to intact plumage
- Consistent laying performance due to less stress
- No blood on the eggs
- More pleasant working conditions for the barn staff

Revolution in effectiveness



Works 12 x faster*



Protects up to 2 x longer*



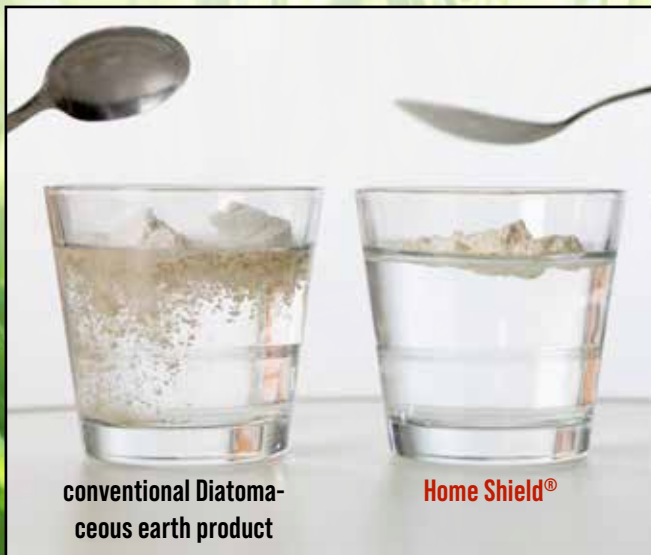
Also adheres to oily surfaces**

*compared to conventional diatomaceous earth products



Home Shield[®] products are hydrophobic

Protects longer because
water repellent



Home Shield[®] products are hydrophobic in different ways depending on their intended use.



Due to the water-repellent surface, Home Shield[®] works very well and quickly even in high humidity.



Home Shield® protects up to **2 x longer**

**Also adheres
to oily
surfaces**



Home Shield® creates a particularly thick build-up at the mites' preferred hideouts and offers the animals little refuge.



In contrast, conventional diatomaceous earth products often create small courses of water, which provide the mites with numerous hideouts and routes to get to their host animals.

Typical mite hiding places 3 months after conventional treatment



The images show a facility coated with a conventional diatomaceous earth product. Significant mite infestation is already apparent after three months. This requires immediate action! We recommend speedy treatment with our Home Shield® products, which are very effective in highly humid areas due to their water-repellent properties and which are therefore ideally suited not only for prophylactic treatments, but also, as in this case, for follow-up treatments.

Accessories for our products

Order now in our shop.



Fossil Shield® mites trap
with instructions and fixing material

Ideal for monitoring mite infestation



www.home-shield.shop

Order now in our shop.



Fossil Shield® mites mirror
with led-lighting

Ideal for detecting hidden mite nests



www.home-shield.shop

Fossil Shield® instant white easy

Revolution in effectiveness



Works 12 x faster*



Protects up to 2 x longer*



Also adheres to oily
surfaces**

*compared to conventional
diatomaceous earth products

Home shield®

*Effective immediately and long-
lasting against red poultry mites*

Fossil Shield® instant white easy is a ready-to-use suspension that, once dried, forms a strongly adhesive, chalking protective coating against red poultry mites.

Beneficial features

Removable with water, dust-resistant and efficient application. Adequate protection from mite infestation throughout the laying period can be achieved by carrying out a thorough coating treatment procedure in the empty, cleaned and disinfected housing (possibly with re-treatment).

Holding systems with wood, plastic and metal parts are especially suitable.

Application

Liquid application. No waiting time. Ready for use immediately. Simply shake up and spray directly into the mite hiding places or on their paths.

Duration of effect

Effective within a few hours and up to 2 x longer than conventional diatomaceous earth products.

Spreading technology

Apply in proper professional manner with a knapsack sprayer / pressurised tank / trigger sprayer at a pressure of 1 - 4 bar.

Active ingredient

Synthetic, amorphous silicon dioxide (as a nano-material, consisting of aggregates and agglomerates); CAS: 68909-20-6 (Nano)

Active ingredient content

7,8 g / 1000 g

UFI: D3CC-U0D0-X000-KCY5

Use biocides safely. Always read the label and product information before use.



Liquid application Fossil Shield® instant white easy



Preventive



Follow-up
treatment



Liquid application

**Including
Fossil Shield®
mites trap +
mites mirror**



Container sizes

- 0,5 l trigger sprayer
- 2,5 l canister
- 10 l canister (incl. mites trap)
- 25 l canister (incl. mites trap und mites mirror)

Made in Germany

Revolution in effectiveness



Works 12 x faster*



Protects up to 2 x longer*



Also adheres to oily
surfaces**

*compared to conventional
diatomaceous earth products

Home Shield®

*Effective immediately and long-
lasting against red poultry mites*

Home Shield® white powder is an immediately usable powder and forms a well adhering chalking protective layer against the Red Poultry Mite. Can be mixed with water if necessary.

Beneficial features

Removable with water, dust-resistant and efficient application. Adequate protection from mite infestation throughout the laying period can be achieved by carrying out a thorough coating treatment procedure in the empty, cleaned and disinfected housing (possibly with re-treatment).

Holding systems with wood, plastic and metal parts are especially suitable.

Application

Dry application: No waiting time. Ready for use immediately. Simply spray directly into the mite hiding places or on their paths.

Liquid application: Stir the contents of the container with water according to the product label.

Duration of effect

Effective within a few hours and up to 2 x longer than conventional diatomaceous earth products.

Spreading technology

Dry application: Blue Jet battery sprayer (Fossil Shield®), knapsack blower (e.g. STIHL ST 450), RTK cavity sprayer, dust gun (Birchmeier Bobby).

Liquid application: battery backpack sprayer / pressure tank / Gloria pressure sprayer / bunting sprayer, 1-4 bar pressure.

Active ingredient

Synthetisches, amorphes Siliciumdioxid (als Nanomaterial bestehend aus Aggregaten und Agglomeraten); CAS: 68909-20-6 (Nano)

Active ingredient content 20 g / 1000 g

UFI: 6PNM-801X-S00N-2H4Q

Use biocides safely. Always read the label and product information before use.

Dry- and liquid application Home Shield® white powder

Including
Fossil Shield®
mites trap
for monitoring mite infestation



Follow-up
treatment



Dry application



Liquid application



Container sizes

- 200 g atomiser bottle
- 2 kg bucket/bag
- 5 kg bag (incl. mites trap)

Made in Germany

Home[®] Shield

*Diatomaceous earth
barn bedding*

Hygiene and wellness for your animal

Home Shield® diatomaceous earth barn bedding is a natural and highly effective hygiene product which can be used in a barn. The main component of this product is natural diatomaceous earth.

Beneficial features

No waiting time. Binds moisture particularly well.

Areas of application

Poultry, chickens, pet birds, reptiles, horses, dogs, cats, rabbits and other mammals in the barn, house and garden.

Dry application

Powder barn floors, nests, lying areas etc. regularly; can also be mixed with conventional bedding/ cat litter or added to the water/sand bath.

Characteristics

Improves hygiene and climate in the immediate vicinity of animals / Binds moisture particularly well / Absorbs odours and harmful gases such as ammonia / Promotes animal health and wellness / Keeps chickens busy by providing scratching and huddling opportunities / Damp spots or dirt on the animals are quickly dried out.

Active ingredient

Natural diatomaceous earth, CAS No. 61790-53-2, other clay minerals.

Active ingredient content

600 g/kg natural diatomaceous earth

Use biocides safely. Always read the label and product information before use.

New!

Dry application Home Shield® diatomaceous earth barn bedding



Dry application



Container sizes

- 2 kg bucket*
- 2 kg bag*

*Delivery only in combination with 2 kg Home Shield® white powder (bucket or bag)

Made in Germany

Spreading technique for dry application

Atomiser bottle



dust gun (Birchmeier Bobby)



atomizer gun



Spreading technique for liquid application

trigger sprayer



backpack sprayer



bunting sprayer



pressure sprayer





Your expert for
professional protection
against the **red poultry mite**
in poultry farming.

FOSSIL SHIELD[®]

protects against red mites

www.fossil-shield.de

Manufacturer:
Bein GmbH
Siedlungsstraße 6-8
D-36132 Eiterfeld · Germany
Telephone: +49 (0) 66 72 - 92 33 0
Email: info@bein-gmbh.de
www.fossil-shield.de

Made in Germany